



LV bolted straight joint connector BSLB-4/16, BSLU-4/16

These bolted connectors are designed for use in low voltage underground joints.

KEY FEATURES

- . A brass body; its inner surface grooved at the manufacturing stage provides excellent electrical contact.
- . 2 steel bolts.
- . Need a unique and standard tool: wrench with socket for 2.5 mm A/F inner hexagon to tighten the bolts.
- . With a central barrier (blocked BSLB) or without (unblocked BSLU)

APPLICATIONS

- . LV underground network
- . Suitable for solid or stranded copper conductors
- . Conductor sizes: 4 to 16 mm² copper

ELECTRICAL PROPERTIES

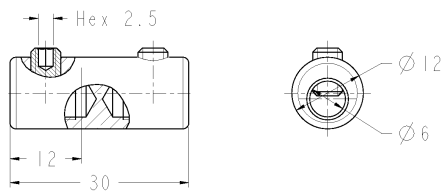
- . Excellent electrical performance
- . Connection copper cable

MATERIALS

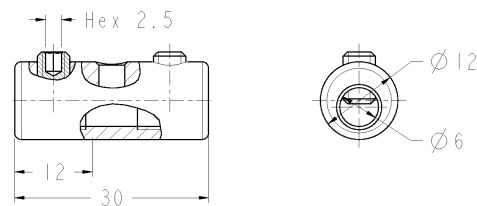
- . Connector body made from brass, bolts from steel.

STANDARDS AND SPECIFICATIONS

- . Designed to meet DIN-47640 requirements
- . Designed to meet IEC-61238-1 class A requirements



BSLB-4/16



BSLU-4/16

	Cu round stranded	Cu round solid
Conductor cross section mm ²	4-16	4-16
Conductor diameter mm	Ø 2,4 – Ø 5,0	Ø 2,2 – Ø 4,6



While TE Connectivity (TE) has made every reasonable effort to ensure the accuracy of the information in this catalog, TE does not guarantee that it is error-free, nor does TE make any other representation, warranty or guarantee that the information is accurate, correct, reliable or current. TE reserves the right to make any adjustments to the information contained herein at any time without notice. TE expressly disclaims all implied warranties regarding the information contained herein, including, but not limited to, any implied warranties of merchantability or fitness for a particular purpose. The dimensions in this catalog for reference purposes only and are subject to change without notice. Specifications are subject to change without notice. Consult TE for the latest dimensions and design specifications. AMP, Raychem, SIMEL, TE Connectivity and TE Connectivity (logo) are trademarks.

Tyco Electronics Simel S.A.S. – TE Energy

1, Rue Paul Martin 21220 Gevrey-Chambertin Tel: 00 (33) 3 80 58 32 00 Fax: 00 (33) 3 80 34 10 15

Energy.te.com

SIM215 Energy PDF Feb 2012



LV bolted straight joint connector BSLB-10/50, BSLU-10/50

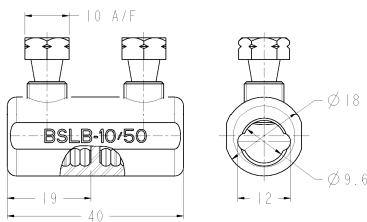
These shear bolt connectors are designed for use in low voltage underground joints.

KEY FEATURES

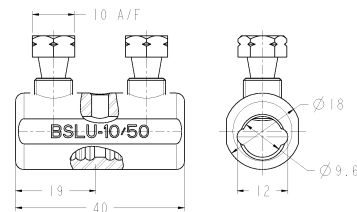
- . A tin plated aluminium alloy body; its inner surface grooved at the manufacturing stage provides excellent electrical contact.
- . 2 aluminium alloy bolts with a shear head in order to control the optimum tightening torque.
- . Need a unique and standard tool: wrench with 10 mm A/F socket to tighten the bolts.
- . With a central barrier (blocked BSLB) or without (unblocked BSLU)

APPLICATIONS

- . LV underground network
- . Suitable for solid or stranded, round or sectorial, aluminium or copper conductors
- . Conductor sizes: 10 to 50 mm² aluminium and copper



BSLB-10/50



BSLU-10/50

ELECTRICAL PROPERTIES

- . Excellent electrical performance
- . Connection on aluminium or copper cable

MATERIALS

- . All components made from aluminium alloy
- . Lubricated with special grease and wax

STANDARDS AND SPECIFICATIONS

- . Designed to meet DIN-47640 requirements
- . Designed to meet IEC-61238-1 class A requirements

	Al				Cu			
	Round stranded	Round solid	Sector stranded	Sector solid	Round stranded	Round solid	Sector stranded	Sector solid
Conductor cross section mm ²	10-50	10-50	10-50	10-50	10-50	10-50	10-50	10-50
Conductor diameter mm	Ø3,6 – Ø8,6	Ø3,4 – Ø7,8	-	-	Ø3,6 – Ø8,6	Ø3,4 – Ø7,8	-	-



While TE Connectivity (TE) has made every reasonable effort to ensure the accuracy of the information in this catalog, TE does not guarantee that it is error-free, nor does TE make any other representation, warranty or guarantee that the information is accurate, correct, reliable or current. TE reserves the right to make any adjustments to the information contained herein at any time without notice. TE expressly disclaims all implied warranties regarding the information contained herein, including, but not limited to, any implied warranties of merchantability or fitness for a particular purpose. The dimensions in this catalog for reference purposes only and are subject to change without notice. Specifications are subject to change without notice. Consult TE for the latest dimensions and design specifications. AMP, Raychem, SIMEL, TE Connectivity and TE Connectivity (logo) are trademarks.

Tyco Electronics Simel S.A.S. – TE Energy

1, Rue Paul Martin 21220 Gevrey-Chambertin Tel: 00 (33) 3 80 58 32 00 Fax: 00 (33) 3 80 34 10 15

Energy.te.com

SIM0216 Energy PDF Feb 2012



LV bolted straight joint connector BSLB-35/95, BSLU-35/95

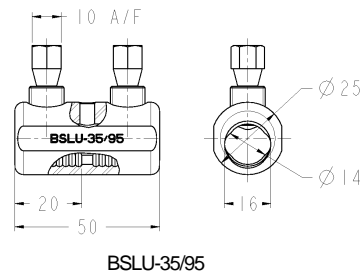
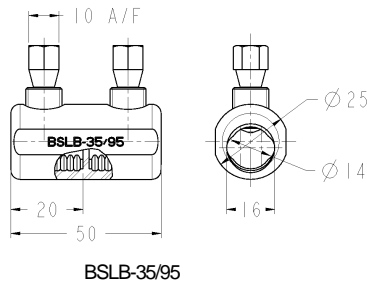
These shear bolt connectors are designed for use in low voltage underground joints.

KEY FEATURES

- . A tin plated aluminium alloy body; its inner surface grooved at the manufacturing stage provides excellent electrical contact.
- . 2 aluminium alloy bolts with a shear head in order to control the optimum tightening torque.
- . Need a unique and standard tool: wrench with 10 mm A/F socket to tighten the bolts.
- . With a central barrier (blocked BSLB) or without (unblocked BSLU)

APPLICATIONS

- . LV underground network
- . Suitable for solid or stranded, round or sectorial, aluminium or copper conductors
- . Conductor sizes: 35 to 95 mm² aluminium and copper



ELECTRICAL PROPERTIES

- . Excellent electrical performance
- . Connection on aluminium or copper cable

MATERIALS

- . All components made from aluminium alloy
- . Lubricated with special grease and wax

STANDARDS AND SPECIFICATIONS

- . Designed to meet DIN-47640 requirements
- . Designed to meet IEC-61238-1 class A requirements

	Al				Cu			
	Round stranded	Round solid	Sector stranded	Sector Solid	Round stranded	Round solid	Sector stranded	Sector solid
Conductor cross section mm ²	35-95	35-95	35-95	35-95	25-95	35-95	35-95	35-95
Conductor diameter mm	Ø6,6 – Ø12	Ø6,1 – Ø11	-	-	Ø5,6 – Ø12,9	Ø6,1 – Ø11	-	-



While TE Connectivity (TE) has made every reasonable effort to ensure the accuracy of the information in this catalog, TE does not guarantee that it is error-free, nor does TE make any other representation, warranty or guarantee that the information is accurate, correct, reliable or current. TE reserves the right to make any adjustments to the information contained herein at any time without notice. TE expressly disclaims all implied warranties regarding the information contained herein, including, but not limited to, any implied warranties of merchantability or fitness for a particular purpose. The dimensions in this catalog for reference purposes only and are subject to change without notice. Specifications are subject to change without notice. Consult TE for the latest dimensions and design specifications. AMP, Raychem, SIMEL, TE Connectivity and TE Connectivity (logo) are trademarks.

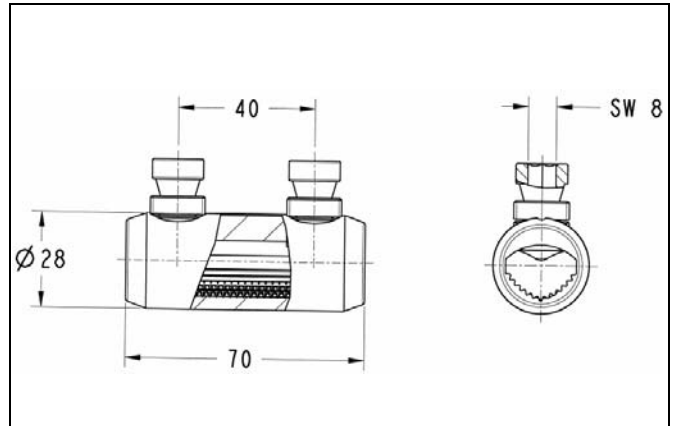
Tyco Electronics Simel S.A.S. – TE Energy

1, Rue Paul Martin 21220 Gevrey-Chambertin Tel: 00 (33) 3 80 58 32 00 Fax: 00 (33) 3 80 34 10 15

Energy.te.com

SIM0217 Energy PDF Feb 2012

**LV Bolted Straight joint connector
BSLU-25/150-S, BSLB-25/150-S,
BSLU-25/150-SU, BSLB-25/150-SU**



Application:

- Designed for use in underground joints up to 1 kV

Description: The connector is made of:

- An aluminium alloy body tin plated or natural finish . Its inner surface grooved at the manufacturing stage provides good electrical contact with wires to be joined.
- 2 aluminium alloy clamping bolts with a shear head in order to control the nominal optimum tightening torque.
- With (BSLB) or without (BSLU) a central barrier to allow connection between plastic and paper cables.

Features and benefits:

FEATURES	BENEFITS
Conductor sizes: 25 to 150 mm ² sectorial aluminium or copper conductors	Range taking
Material: body: high strength tin plated or natural Al-alloy bolts: high strength tin plated brass with special treatment	Good electrical performance Connection on aluminium or copper cable
Solid moisture block barrier (BSLB type)	Allow connection between paper and XLPE cable
Equipped with: Shear bolts Reduced shear off torque	No special tool required
Comply with DIN VDE 0220 part 1	Reliable
2 shear point bolts	Reduced stand proud of the bolts after shear off

LV Bolted Straight joint connector BSLU-25/150-S, BSLB-25/150-S, BSLU-25/150-SU, BSLB-25/150-SU

Characteristics:

Description	Pn	RPN	Cross Section mm ²	Type	Finish	PPQ	Weight (g)
BSLU-25/150-S	0-1201224-7	D72324-000	25-150 sectorial	Unblocked	Tinned	1	130
BSLB-25/150-S	2-1201549-6	F04358-000	25-150 sectorial	Blocked	Tinned	1	135
BSLU-25/150-SU	2-1201221-0	948152-000	25-150 sectorial	Unblocked	Natural	1	130
BSLB-25/150-SU	2-1201549-0	E89808-000	25-150 sectorial	Blocked	Natural	1	135

Application - Diameter range table:

	AL				CU
	RM ROUND STRANDED	RE ROUND SOLID	SM SECTOR STRANDED	SE SECTOR SOLID	SM SECTOR STRANDED
Querschnittsbereich Conductor cross- section mm ²	25-95	25-95	25-150	25-150	25-150
Conductor diameter Leiterdurchmesser mm	Ø 5.7 - Ø 12.5	Ø 5.5 - Ø 11	-	-	-

Energy Division

<http://energy.tycoelectronics.com>

All of the above information, including drawings, illustrations and graphic designs, reflects our present understanding and is to the best of our knowledge and belief correct and reliable. Users, however, should independently evaluate the suitability of each product for the desired application. Under no circumstances does this constitute an assurance of any particular quality or performance. Such an assurance is only provided in the context of our product specifications or explicit contractual arrangements. Our liability for these products is set forth in our standard terms and conditions of sale.

ALR, AMP, AXICOM, B&H, Bowthorpe EMP, Critchley, Dorman Smith, Dulmison, Hellstern, La Prairie, Morlynn, Raychem, SIMEL and SUCOFIT are trademarks.

Hellstern

Tyco Electronics SIMEL S.A.S. – Energy Division

Route de Saulon · F-21220 Gevrey-Chambertin · Tel. (033) 3.80.58.32.00 · Fax (033) 3.80.34.10.15



LV bolted straight joint connector BSLB-95/240, BSLU-95/240

These shear bolt connectors are designed for use in low voltage underground joints.

KEY FEATURES

- . A tin plated aluminium alloy body; its inner surface grooved at the manufacturing stage provides excellent electrical contact.
- . 4 aluminium alloy bolts with a shear head in order to control the optimum tightening torque.
- . Need a unique and standard tool: wrench with 10 mm A/F socket to tighten the bolts.
- . With a central barrier (blocked BSLB) or without (unblocked BSLU)

APPLICATIONS

- . LV underground network
- . Suitable for solid or stranded, round or sectorial, aluminium or copper conductors
- . Conductor sizes: 95 to 240 mm² aluminium and copper

ELECTRICAL PROPERTIES

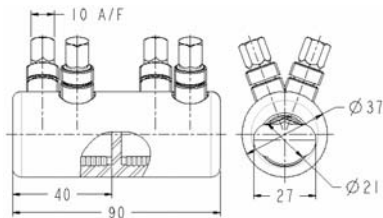
- . Excellent electrical performance
- . Connection on aluminium or copper cable

MATERIALS

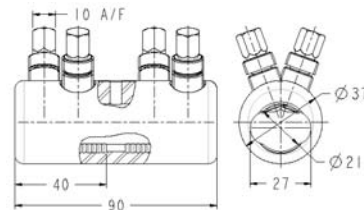
- . All components made from aluminium alloy
- . Lubricated with special grease and wax

STANDARDS AND SPECIFICATIONS

- . Designed to meet DIN-47640 requirements
- . Designed to meet IEC-61238-1 class A requirements



BSLB-95/240



BSLU-95/240

	AL				CU	
	Round Stranded	Round Solid	Sector Stranded	Sector Solid	Round Stranded	Sector Stranded
Conductor Cross-section	95-240	95-240	95-240	95-240	70-240	95-240
Conductor Diameter	Ø 11 – Ø 20	Ø 10.5 – Ø 18	-	-	Ø 9,3 – Ø 20	-



While TE Connectivity (TE) has made every reasonable effort to ensure the accuracy of the information in this catalog, TE does not guarantee that it is error-free, nor does TE make any other representation, warranty or guarantee that the information is accurate, correct, reliable or current. TE reserves the right to make any adjustments to the information contained herein at any time without notice. TE expressly disclaims all implied warranties regarding the information contained herein, including, but not limited to, any implied warranties of merchantability or fitness for a particular purpose. The dimensions in this catalog for reference purposes only and are subject to change without notice. Specifications are subject to change without notice. Consult TE for the latest dimensions and design specifications. AMP, Raychem, SIMEL, TE Connectivity and TE Connectivity (logo) are trademarks.

Tyco Electronics Simel S.A.S. – TE Energy

1, Rue Paul Martin 21220 Gevrey-Chambertin Tel: 00 (33) 3 80 58 32 00 Fax: 00 (33) 3 80 34 10 15

Energy.te.com

SIM214 Energy PDF Feb 2012